



**SIGBI THEME FOR 20-21**  
**"Road to Equality"**

## President Message



**Ms. Roopa Mahesh**  
**President**  
**SI Madurai**

Dear Sisters,

Greetings!!!!

Climate change refers to the change in environmental conditions of the Earth. It has become a global concern over the last few decades, since it has various impacts on the Ecosystem & Ecology. Forest fire, Melting of glaciers, intense rainfall are all caused by Global Warming. We need to prevent global warming and protect Mother Earth.

Climate change is a global challenge and has no borders and to combat, it requires coordinated work by all countries. The whole idea behind the event we had this month with all the federations is to create awareness and exchange knowledge. Because climate literacy is very essential for a low carbon living.

Planting trees is the best way to combat climate change. As trees grow, they stop climate change by removing Co2 from the air and also lower atmospheric temperature. So, Let's join hands in planting 1 Trillion trees campaign and save Mother Earth.



# There is a no planet B Climate Change

## 29th August 2020 Programme

### SI Prayer

Ms Anita Britto

### Welcome Address

Ms Roopa Mahesh

### Recognizing International Speakers

Ms Anitha Rajarajan

### Appreciation and Acknowledgement of our SI Founder Member

Ms. Anitha Rajarajan

### Introducing the chief guest

Dr Lalitha Prajna

### Chief guest address

Ms. Mridula Ramesh

### Session on "Climate Change" Moderator

Ms Mridula Ramesh

### Presentations by

National Speakers - 10

International Speakers - 5

### Observers perspective

### Miyawakie Cultivation

Ms Sangeetha Ranjit

### Vote of Thanks

Ms Priyadarshini Karthik

### National Anthem

## "Climate Change" Presenters

### Ms Jill Godwin

Australia

**Climate Change in Australia**

### Ms Salley Enos

Bombay ,Chembura

**Solid Waste Management**

### Ms Shashikala Menon

Bangalore

**Restoration and rejuvenation of our lakes**

### Ms. Selza Noronha

Bangalore, White field

**Sustainable cities with a healthy environment**

### Ms Tania

Belgium

**Nature and Landscaping in Aalst**

### Ms Ayushi Kundu

Calcutta

**Plastic boom is our doom**

### Ms Shree Latha Narayanan

Chennai

**Socio Economic impact of climate change**

### Ms Naina Shah

Chennai Downtown

**Climate Change in in my city**

### Ms Sue Beech

Coventry

**Traffic Pollution in Coventry**

### Ms. Harbindhar Singh

Hyderabad

**The reclamation of land and lakes**

### Ms Shukla Chattopadhyay

Kolkata South

**III Effects of climate change**

### Ms Barbara

Manchester

**Clean air for greater Manchester**

### Ms Kulsam Kaur

Pune

**Climate Change**

### Ms Benita Sen

Pune Metro East

**Smart City**

### Ms Nanell

Dalles

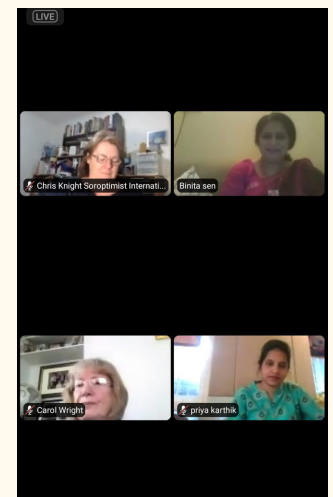
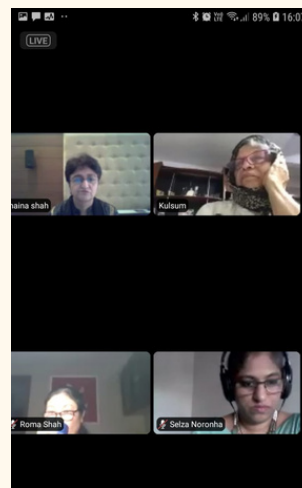
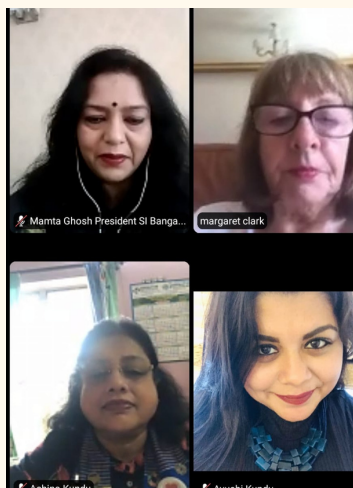
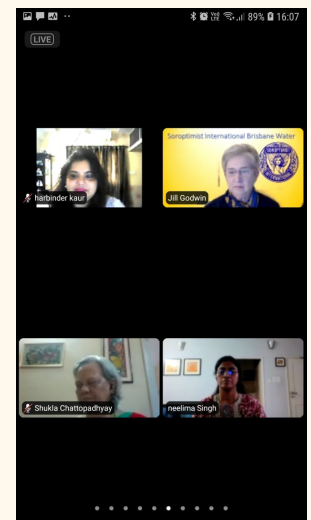
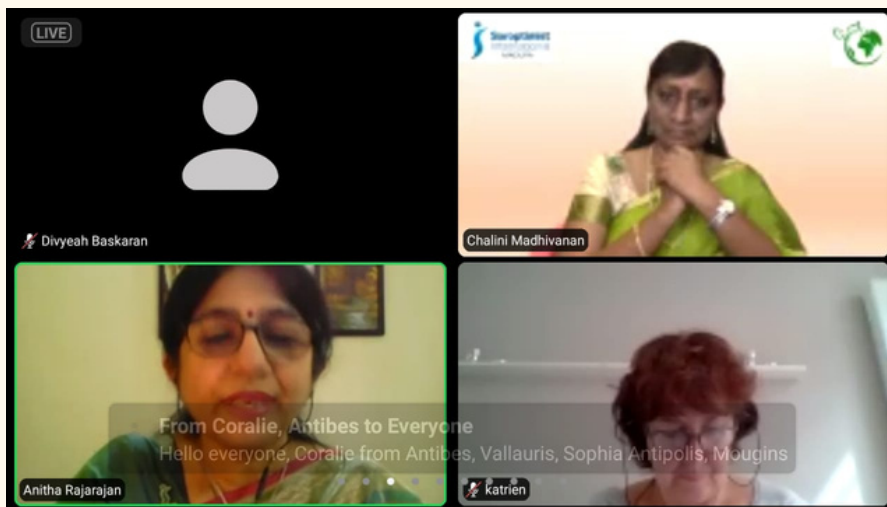
**Climate Change**

**SI Madurai conducted the Mega Event on the most needed topic of climate change involving all the National and International SI Clubs.**

**The virtual zoom meeting was conducted on 29th August 2020 @4.30pm**

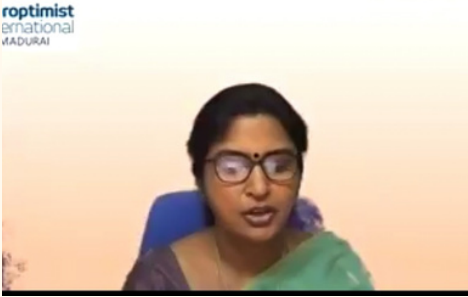
**It was a vibrant event with the active participation of speakers from various clubs with more than six hundred participants and viewers.**

**YouTube link : [https://youtu.be/wD\\_aT4hy1Z4](https://youtu.be/wD_aT4hy1Z4)**



## Climate Change

The virtual meeting was hosted by SI Madurai.  
The event was beautifully conducted by our MC Dr Usha kim, with able  
Technical support by Dr.Chalini Madhivanan



**MC**  
**Dr. Usha Kim**



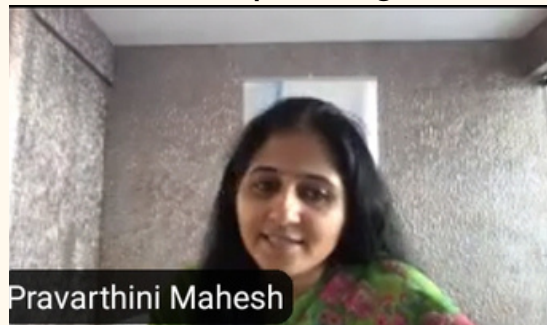
**Technical Support**  
**Dr Chalini Madhivanan**

The SI prayer by Ms. Anitha Britto.



**SI Prayer**  
**Ms Anitha Britto**

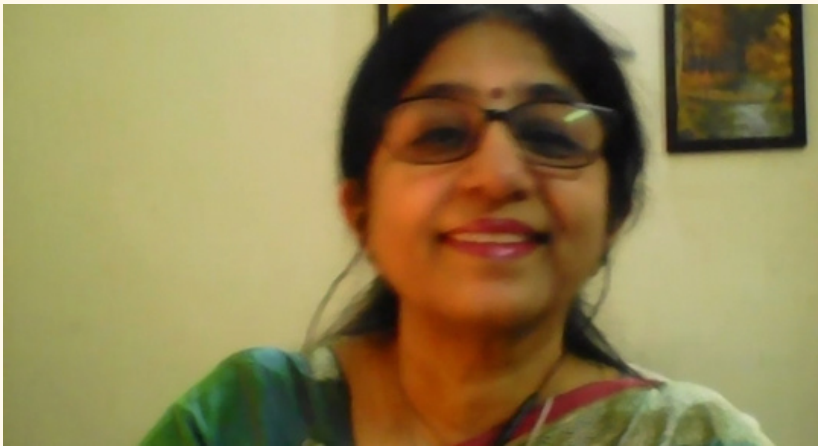
SI Madurai President Ms Roopa Magesh welcomed the gathering.



**Welcome Address**  
**Ms. Roopa Magesh**  
**SI Madurai President**



## Climate Change



Our founder president  
Ms Anitha Rajarajan  
Introduced our Friendship link  
as well as the international  
delegates

### Ms Anitha Rajarajan

Founder president was chosen as one of the top hundred women soroptimists all over the world. Ms Anitha Rajarajan acknowledged the honour.



### #WhoIsShe Congratulations

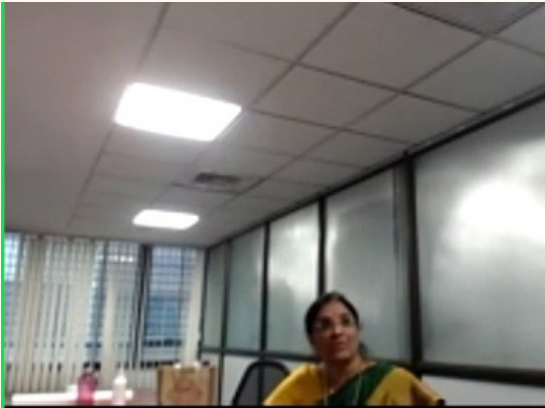
to our member **Anitha Rajarajan** who is being celebrated for our centenary as one of some hundred women who have made a difference.

We are proud of her!



Ms Anitha Rajarajan  
Interview in  
the  
local  
Newspaper

# Climate Change

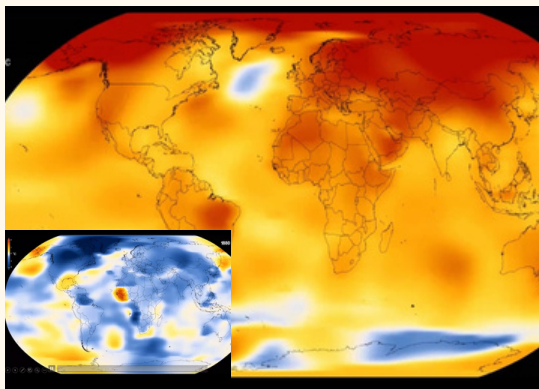


Dr Lalitha Prajna introduced our chief guest Ms Mridula ramesh.

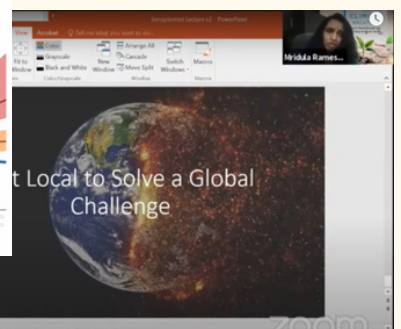
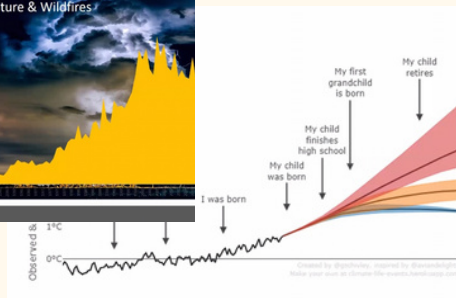


**Ms. Mridula Ramesh, our chief guest and moderator delivered an over all birds eye view on Climate Change**

Mridula Ramesh is the author of critically acclaimed" book on "The climate solution-India's climate change crisis and what we can do about it". She is the founder of the Sundaram climate institute, which focuses on waste and water solutions and education. She is a regular columnist for First post on climate change and has written for the Hindu, Live Mint,Bloomberg Quint and Conde Nast.



Incidence of Floods, Storms and Landslides in India





# Climate Change



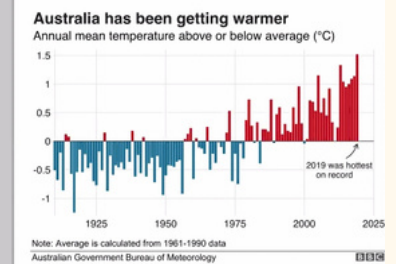
## Ms Jill Godwin Australia Climate Change in Australia

Jill Godwin was highlighting on Bush fire contributed by drier climate causing calamity to the human beings and native animals. Drier climate with raised temperature is due to coal and other minerals production industries. As this industry plays key role in the economy of the country, they have to balance the action strategy. Soroptomists advocate the State and Federal Government to renewable energy policies. They are providing relief and support to bush fire victims through their disaster fund. They also support the wild life rehabilitation group.

### Climate Change in Australia

- Australia is one of the world's biggest per capita greenhouse gas emitters, and there's been a long-running debate about the country's approach to climate change.
- The Climate Change Performance Index ranked Australia last out of 57 countries responsible for more than 90% of greenhouse gas emissions on climate policy.
- It highlighted the country's no-show at a UN climate summit last September and its withdrawal from an international fund to tackle climate change

- **Australia is one of the most vulnerable countries on the planet to rising temperatures**, yet there is still denial by the federal government about the impacts of rising CO2 levels on events like bushfires.
  - There is no serious doubt about scientific institutions that **rising global temperatures are leading to record heat**.
  - Global warming boosts the risk of the hot, dry weather that's likely to cause bushfires by at least 30%.
  - If global temperatures rise by 2°C, as seems likely, **such conditions would occur at least four times more often**.
- World Weather Attribution Consortium



### Climate change and the Australian economy

- Australia is among the world's largest exporters of iron ore, uranium, coal and natural gas.
- It was the fourth largest producer of coal in 2017, according to the International Energy Agency.
- Phasing out coal is considered crucial to limiting global warming to within 1.5°C, but the Australian government is continuing to back fossil fuel industries **for the role they play in the economy**.

### Consequences of the 2019–20 bushfire season

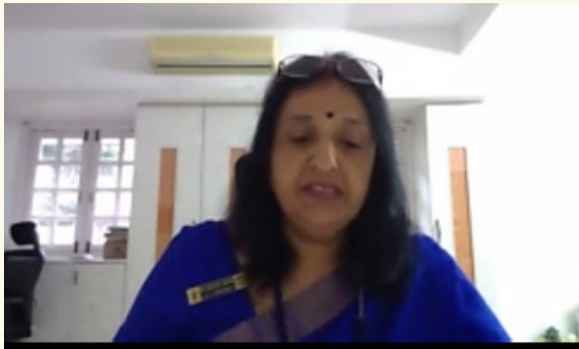
- 34 humans died directly and 417 indirectly (smoke inhalation)
- An estimated 3 billion native animals were killed or displaced with 119 species listed as requiring immediate intervention for survival
- 9 352 buildings destroyed – 3500 homes, 5852 outbuildings
- Millions of tourist dollars were lost to small towns during peak the summer season.

## Climate Change



**Ms Salley Enos**  
**Bombay ,Chembura**  
**Solid Waste Mangement**

Bombay city tops the list of metros in solid waste generated. Climatic solution to the human induced climate change is taken up at 3 levels...Governmental, Community and Individual. Soroptomists play major role in creating awareness in the community, initiate in Reuse of materials and students are encouraged to make and use paper bags. Individually the household wet waste is converted to compost and dry waste is recycled.

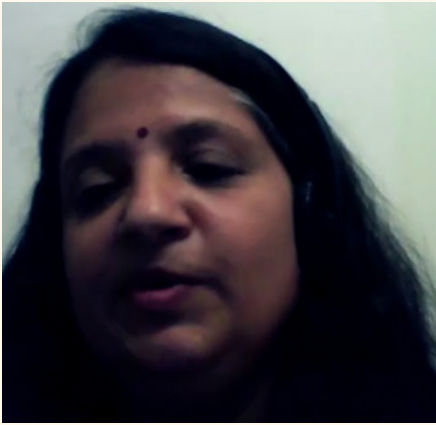


**Ms Shree Latha Narayanan**  
**Chennai**  
**Socio Economic impact of climate change**

Chennai is witness to climate induced impacts like floods, heavy rain followed by droughts. There has been a decline of 4% in the annual rainfall along with the increase in the mean temperature. Included in the efforts are urban reforestation, restoration of lakes and significant reduction in the use of non degradable material. The constructions of rain water harvesting structures in both public and private buildings contribute to a rise in the water table.



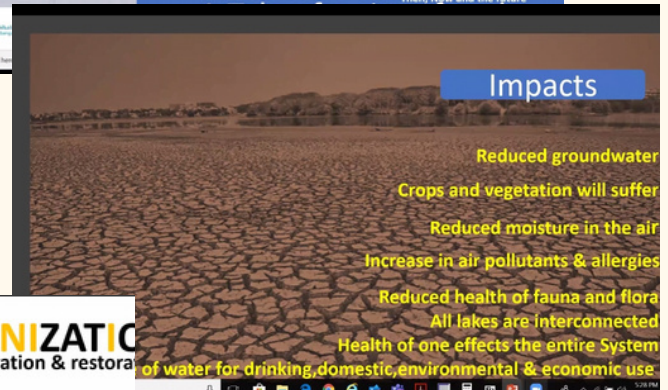
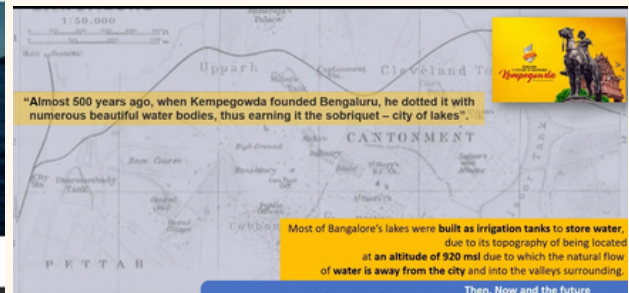
# Climate Change



**Ms Shashikala Menon**  
**Bangalore**

**Restoration and rejuvenation of our lakes**

Shashikala Menon was sharing the tale of a city of lakes converting to city of tanks.. Because more than 90% of Bangalore's lakes are polluted or encroached. Bangalore Soroptomists under the theme of " Recognize, Reiterate, Realize", they are educating, creating awareness, advocating good environment practices and trying to bring out the changes.

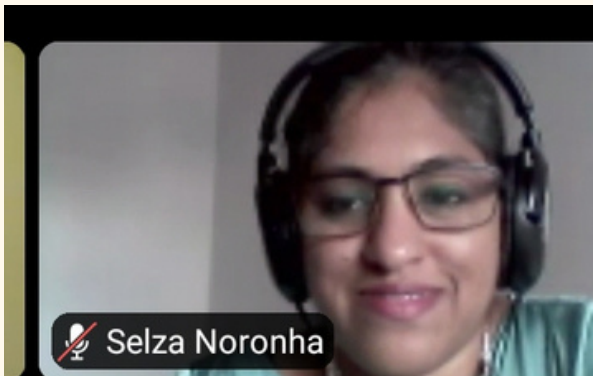


**WHAT CAN I DO?**

Shift from **URBANIZATION** to conservation & restoration

- Be more conscious of our actions
- Minimize immersions/Look for eco-friendly alternatives
- Participate in eco-conservations drives
- Contribute in your own small way to eco-conservation projects
- Take initiatives in your own micro-societies
- Educate & create awareness of conservation
- Allocate one portion of your CSR funds to environment betterment
- Be the change you want to see

# Climate Change



**Ms. Selza Noronha**  
**Bangalore, White field**

**Sustainable cities with a healthy environment**

Selza Naronha states that her fellow Soroptimists are very clear to make the city sustainable with a healthy environment by implying two major actions in educating and adopting "Green the Red" that is for sustainable menstruation. Reaching out the community to adopt composting biodegradable waste at home.

**Climate Change**

methane  
is produced by food rotting in landfill, contributing to global warming

What's the Problem?  
**Bengaluru sends >3500 MT mixed waste to landfills, every day.**

Action:  
**Sustainable Menstruation**  
**Compost Household Kitchen Waste**

Presenter: Selza Noronha  
Member of SI Whitefield (Bengaluru)

**Understanding the Problem**

- Bengaluru population >10M
- 5000 MT per day of solid waste
- Per day, 3500 MT mixed-waste ends up in landfills**
- BBMP to add more landfills and install Waste-to-Energy plants.

Refer fig. for Waste Composition in Bengaluru  
**Wet Waste: 61 % (3050 MT)**  
26% (1300 MT) Organic waste  
35% ( 1750 MT) Vegetable waste

BBMP wet waste composting only effected 3.14% reduction.

Disadvantages of landfills and incinerators

1. Non-sustainable
2. Do not encourage reduce, reuse and recycle
3. Carcinogenic gases and other health hazards
4. Environmental Racism

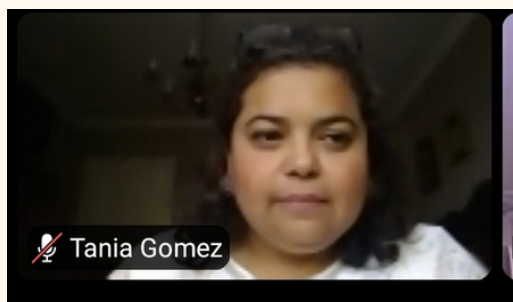
Source: BBMP (2012)  
BBMP: Bruhat Bengaluru Mahanagar Palika

Category	Percentage
Vegetable Waste	35%
Organic Waste	26%
Wet Waste	61%
Plastic	12%
Other	1%
Biomedical	2%
Textiles	4%
Gardens	4%
Others	1%

**Simple Solutions. Create Impact.**

Sustainable Menstruation	Compost Kitchen Waste
Reduce household sanitary waste	Reduce mixed waste in landfills
<ul style="list-style-type: none"><li>Collaborate with 'Green the Red'</li><li>Distributed 6000 cloth sanitary pads</li><li>2500 stopped using disposable products</li><li>Continue to conduct 1-2 sessions per month</li></ul>	<ul style="list-style-type: none"><li>Collaborate with 'Green Footprints'</li><li>Build awareness and drive adoption</li><li>24 communities in 12 months</li><li>Adoption in 6 communities</li><li>End-to-end solution from 'Green Footprints'</li></ul>

# Climate Change



**Ms Tania Gomez**  
**Belgium**

## Nature and Landscaping in Aalst

The problem lies in the sector of flooding and erosion. The main effects are due to increased precipitation leading to flooding but also with the sharp decrease in the summer leading to water shortage and erosion. Soroptomist's main projects are forestation and planting campaigns

### Climate Change Action Plan



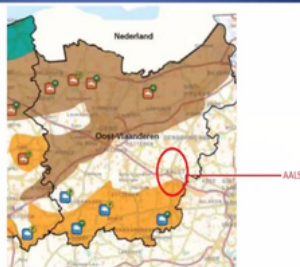
### Stopping the greenhouse effect

### Main effects

- Warming of 0.9° to 2.3°C in winter while our average is 2,4 °C
- During summer the increase will be 0.9° to 2.8°C being 17,6 °C the average.
- Increased precipitation, leading to floodings but also with sharp decrease in the summer leading to water shortage and erosion.
  - Aalst's water system under pressure
- Increase on sea levels. 1 meter expected in 2100 which will be a flooding cause.

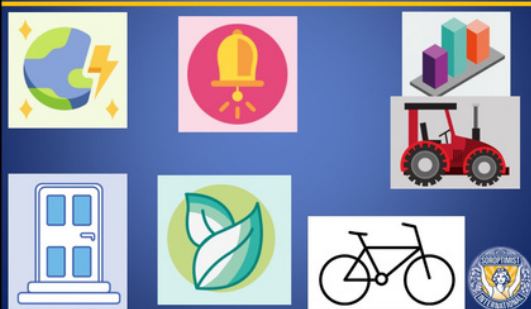
Legenda

	drought arable farming
	drought pasture
	drought nature
	flooding arable farming
	flooding nature
	erosive area
	drought prone area
	area prone to salinization



Figuur 2. Klimaatgevolgen voor landbouw en natuur (landelijk gebied). Bron: Klimaat-effectenboek West- en Oost-Vlaanderen, Bodemkundige dienst België, 2012

### Mitigation plan



### Nature



Forestation projects



Planting campaigns



# Climate Change



**Ms Ayushi Kundu**  
**Calcutta**

## Plastic boom is our doom

Ayushi feels " Plastic boom is our doom ". The customers all prefer plastic bags for their shopping and cause high plastic bag pollution in Calcutta. The measures taken by Soroptimists are on the principles of 'Reduce, Recycle and Reuse.'

### PREFERENCE FOR PLASTIC BAGS AND CAUSE OF HIGH PLASTIC BAG POLLUTION IN KOLKATA: EXPLAINED

Convenient to use, durable and easily available (alternatives such as paper bags are not as durable and convenient)	Manufacturing costs are cheap (alternatives such as paper bags are more expensive to produce)	Consumers are reluctant to reuse and recycle plastic bags and are apathetic towards environmental damage
Customers refuse to purchase goods from shopkeepers unless plastic bags are provided	Difficult to dispose (not accepted by plastic traders/dealers as they are under 40 microns), hence end up being dumped or burnt	Law enforcement is weak - shopkeepers get away easily by bribing police officials



### PREVENTIVE MEASURES: GIVING OUR TILOTTAMA A MAKEOVER

- Reuse and recycling of single use plastic bags.
- AWARENESS DRIVES to educate vendors and consumers.
- Additional taxes on plastic bags below 40 microns, to make them more expensive and hence less accessible.
- Increase accountability of monitoring agencies such as the Kolkata Municipal Corporation.
- Financial incentives such as tax sops to encourage the use of viable alternatives.
- Spot checks on vendors to deter use of plastic bags and impose heavy fines/penalties for default.
- Encourage proper segregation at residential, commercial and institutional areas.
- Encourage formation of committees with regulatory authorities, CIO, and customers to effectuate genuine implementations.

- 1200 MT of plastic waste is produced on a daily basis in Kolkata, and is left untreated.
- Since 2001, several steps have been taken by the West Bengal Pollution Control Board, Department of Environment under the Government of West Bengal to curb plastic wastes.
- Manufacture, storage and use of plastics below 40 microns thickness is banned in Kolkata. A blanket ban is imposed on the use of plastic bags in government buildings, historical sites and eco-sensitive zones.
- Despite a ban on plastic carry bags for close to 2 decades, use of the same is still prevalent in shops and markets, and continue to pollute the landfills and drainage systems.



## Climate Change



### Ms Naina Shah Chennai Downtown Climate Change in my city

Chennai Soroptimists are community oriented. They focus on community co operation to get the system correct from the beginning. They are working towards eco friendly, self sufficient and self sustaining life style to mitigate climate change. They are promoting rain water harvesting, solar panels, kitchen garden, biogas plant and organic vegetable terrace garden in the community.



#### Impact of Climate Change on Chennai

- Flood Disasters and Drought (Water Crisis) are two serious impacts of Climate Change in Chennai.
- Chennai Bay of Bengal Sea is warmer. This would mean direct impacts on sea water current, atmospheric pressure, atmospheric and uneven tropical rainfalls.
- Sea Water Intrusion in the city's ground table will greatly impact the water quality and public health of citizens.



#### In Greta, Chennai finds its climate change icon

- In Chennai, which has seen a string of extreme weather events, the threat of climate change is real and has been a wake-up call
- A city of eight million people, Chennai has witnessed massive protests, and youngsters have always been the driving force
- In 2015, traditional barriers of caste and class came down briefly as the city united to work on flood relief, led by millennials who used social media to coordinate rescue work.



#### SI Chennai Downtown

#### CHENNAIites BEYOND

CHENNAI FLOODS RAGE NATURE'S LAW CMWSSB DAMAGES DECEMBER 2015 RUMOUR RELIEF SURVIVAL DEATHS



Volunteering to pack food packets  
Bhoomika Trust have been able to distribute 1,90,000 cooked food packets across the affected areas.

# Climate Change



## Ms Sue Beech Coventry Traffic Pollution in coventry

The problem is focused on Nitrogen oxide emission due to traffic congestion. The Soroptimists are supportive to their Government policy on Local Air Quality Action Plan (LAQAP). They promote less usage of vehicles by motivating to go by walk to nearby places, usage of cycles, sharing the car, using hybrid cars with less emission of gas etc.

### Nitrogen Dioxide (NO<sub>2</sub>) Emissions

- Caused largely by diesel and petrol vehicles, especially in congested conditions
- Exacerbate climate change
- Can give rise to acid rain
- Impact harmfully on people's health



To reduce NO<sub>2</sub> emissions, Coventry Council developed a Local Air Quality Action Plan (LAQAP)



### LAQAP

- Aim is to reduce car use and congestion, hence to reduce NO<sub>2</sub> emissions
- Based on 3 key principles:
  - Behaviour Change
  - Cleaner Vehicles
  - Infrastructure and Technology



### Cleaner Vehicles



- 10 new electric buses going into service
- All buses to be low or zero emission by 2021
- Electric taxi 'Try before you Buy' scheme
- Network of electric vehicle charging points in all areas of the city
- Electric Fleet First project (in conjunction with Highways England)



### Behaviour Change

- Encourage people to walk, cycle, or use public transport for local journeys by:
  - Working with schools, businesses and local communities
  - Constructing safe cycle routes
  - Cycle parking at schools and nurseries
  - Use of mobility credits
- Encourage car-sharing
- Encourage use of park and ride



# Climate Change



**Ms. Harbinder Kaur  
Hyderabad**

## The reclamation of land and lakes

Harbinder from SI Hyderabad was talking on the changes happening on green cover due to vast increase in the urban built up area by encroachment on the water bodies and vegetative land due to increased population. They are concentrating on afforestation, Miyawakie cultivation, reclaiming water bodies and avoiding industrial pollution.

### What is Needed...

- Afforestation/ Miyawaki:** Miyawaki is a technique pioneered by Japanese botanist and plant ecology expert Akira Miyawaki to restore mini forests in populated areas, similar to urban afforestation.
- Electric Mass Transport System:** Electric vehicles powered entirely by electricity do not emit any dangerous gasses, the power can be tapped from renewable technologies like geothermal, hydro, solar, wind turbines.
- Industrial Policies:** Industrial policies must be regulated to award industries with lower emissions and penalize those with higher emissions. Governance systems have largely failed to adequately address the challenges that climate change poses.
- Reclaim Water-bodies:** Lakes are our largest catchment for rain-water and ground-water recharge. Initiatives should be taken to align and amplify the efforts towards lake conservation and greening.
- Create Awareness:** No initiative can ever succeed without the involvement of the people. The citizens must be made aware of the criticality. Schools should be roped in and young students sensitized on climate change.
- Protection of species/Habitat:** Protect the Environment. Participate in or hold your own local trash clean-up to help protect the habitats of endangered species and other wildlife. **Reduce, reuse, recycle!**

### Hyderabad:

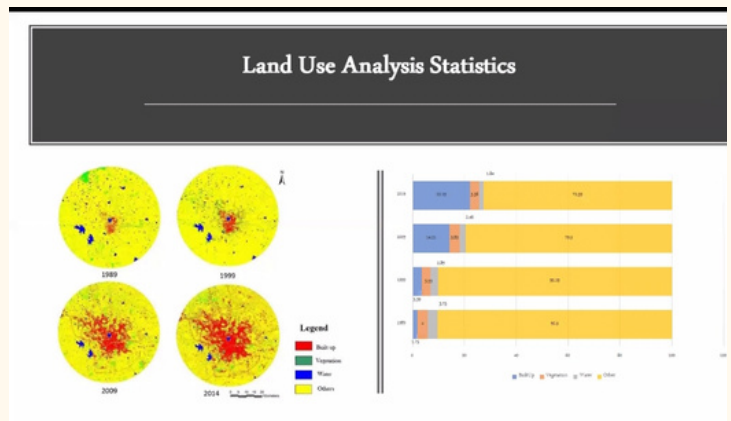
- Was established by Muhammad Quli Qutb Shah in 1591
- Is the capital and largest city of the Indian state of Telangana and the *de jure* capital of Andhra Pradesh
- Occupies 625 square kilometres (241 sq mi) along the banks of the Musi River
- Is located on the Deccan Plateau in the northern part of South India
- Is built on a rocky terrain, hence the potential to use ground water is limited
- Is dependent on surface water (lakes)

But its water-bodies are shrinking and disappearing. And, So is the Green Cover! Their revival is critical for sustenance.

### What we did

- Vocal of usage of menstrual cups
- Promoted bags made of old sarees
- Recycled newspapers
- Conservation of lakes
- Plantation Initiatives

**Our Responsibility Towards Nature**





# Climate Change



## Ms Shukla Chattopadhyay Kolkata South III Effects of climate change

III effects of climate change in Kolkatta was well discussed by Shukla, SI, Kolkatta. The main causes are decreasing mangrove protection of the sunderbans, losing tree cover in the city due to cyclone, extraction of ground water and total unpreparedness to deal with the crisis.

### Causes

- Decreasing Mangrove protection of the Sunderbans
- Losing Tree Cover in the city: cyclones
- Concrete jungle increasing
- Carbon Emission
- Extraction of Ground Water
- Total unpreparedness to deal with the crisis

### Impact of the decreasing mangrove forests on Kolkata

- Kolkata faces more intense and more frequent storms, cyclones and even super cyclones, river tides and floods.
- Cyclones destroy the already decreasing tree cover in the city.
- Super Cyclone Amphan uprooted more than 5500 trees in Kolkata alone. May 2020
- Bulbul---Nov 2019
- Fani---April 2019
- Phailin---Oct 2013
- Aila---May 2009

### III EFFECTS of CLIMATE CHANGE in KOLKATA

- Excessive Heat & Humidity: Kolkata has the highest increase in temperature among the megacities in India. It is warming faster than the global average.
- Global Average 1 degree C
- India Average 1 degree C
- Kolkata 1.2 degree C & 75% humidity in May
- Erratic Rainfall Humidity in the Monsoons is higher
- Excessive Waterlogging

### Effective Ways to Combat Climate Change

- We are partnering with NGOs working in the Sunderbans. We plan to plant many higher value, storm stopping mangrove species like the Sundari trees.
- Engage with other NGOs to plant more suitable and hardy trees in and around Kolkata like the Badam (Terminalia Catappa)
- Engage with NGOs to start rain water harvesting schemes
- Awareness sessions for the young, future citizens



# Climate Change



**Ms Barbara Manchester**  
**Clean air for greater Manchester**

Manchester problem is focused on Air Pollution due to industries and vehicles. Greater Manchester is aimed at with plans that will accelerate the city region's 2038. Zero carbon ambitions build a greener economy and deliver a long term plan for development. Soroptomists are raising awareness, proposing alternate solutions, planting trees and taking direct action if appropriate.

**CLEAN AIR FOR GREATER MANCHESTER**

**THE PLANS**  
"GREATER Manchester leaders are unveiling a clear single vision supported by three complementary plans that will accelerate the city-region's 2038 zero carbon ambitions, build a greener economy and deliver a long term plan for development"  
[GREATER MANCHESTER COMBINED AUTHORITY](#)

**THE REALITY**

- Reduction in greenbelt land
- Building new roads
- Destruction of trees, peat bogs and natural habitats
- Risk of flooding
- A planning process that favours developers

**THE ISSUE**  
"We estimate in Greater Manchester that air pollution is the biggest environmental cause of poor health. Up to 1,200 deaths each year are contributed to by poor air quality"  
ELEANOR ROAF, DIRECTOR OF PUBLIC HEALTH FOR AIR QUALITY

**ACTION IS NEEDED NOW!**

Working as a Soroptimist group and with local partners  
Raising awareness  
Proposing/ advocating alternative solutions  
Taking direct action if appropriate  
Planting trees!

**THE CONTEXT**  
A city built on industry and commerce, but

- Not enough homes
- A reliance on the car for travel

Taking individual actions  
Walk and cycle more  
Use public transport  
Switch off that engine!

**TAKE ACTION NOW!**

# Climate Change



**Ms Kulsam Kaur**  
**Pune**  
**Climate Change**

Soroptomist from Pune SI Kulsam Kaur was explaining the climate changes happening in Pune and the role played by them.



**Ms Benita Sen**  
**Pune Metro East**  
**Smart City**

Soroptomists at Pune Metro East are concentrating on waste management, promoting plantation, terrace and vertical gardening, Miyawakie cultivation etc. They are taking measures for water management and energy management.

**Soroptomist International** Great Britain & Ireland

**WATER MANAGEMENT**

- The Mula-Mutha is a river in India, formed by the confluence of the Mula and Mutha rivers in the city of Pune.
- Pollution from Chemical effluents leads to damage to flora and fauna, reduction in migratory birds.
- Many water-borne ailments.
- Due to high levels of pollution, including 123 MLD of untreated sewage water being discharged into the river by the Pune Municipal Corporation, the Maharashtra Pollution Control Board has classified the water quality to be of Class-VI.

- Water Management
- Paid Water
- Rain Water Harvesting
- Recycling Water
- Sewage Treatment
- Drip Fan

**Soroptomist International** Great Britain & Ireland

**WASTE MANAGEMENT**

- SEGREGATION OF WASTE
- VERMICULTURE
- WASTE MANAGEMENT AT SOURCE
- PAYMENT FOR WASTE MANAGEMENT
- RUBBISH TO RESOURCE

- Creating garbage dumps in Devachi Uruli a place on the outskirts of Pune causing illness and finally a ban on garbage dumping

**Soroptomist International** Great Britain & Ireland

**GREEN PUNE**

- CULTIVATE GREEN PATCHES IN THE URBAN SETTING
- PLANT MORE TREES, CREATE FORESTS
- VERTICAL and TERRACE GARDENING
- GROW YOUR OWN HERB GARDEN AND ORGANIC VEGETABLES
- TIE UP WITH KALPAVRIKSH and PARISAR NGOs

**Soroptomist International** Great Britain & Ireland

**ENERGY MANAGEMENT**

- GREEN THE ENERGY GRID
- SOLAR ENERGY
- WIND ENERGY (SULLON INDIA)
- HYDRO ELECTRICITY
- MAINTENANCE
- USE LED LIGHTS
- DO NOT WASTE ELECTRICITY
- ENERGY EFFICIENT APPLIANCES
- REGULATE AND MINIMISE POWER CUTS

**SI PUNE METRO EAST IN ACTION**

**Women Inspiring action, Powering lives**



## Climate Change



**Ms Nanell - Dalles**

Nanelle from Dallas was attributing the disastrous happenings due to climate changes. The melting glacier increases the sea water level causing erosion of beach. Because of rain storm ,there is increased flooding and damage to the homes,shopping malls etc affecting the economy of the city.

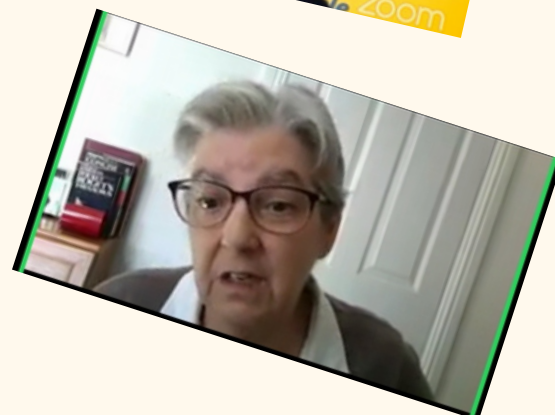
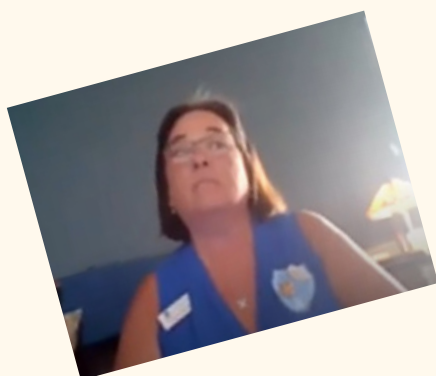
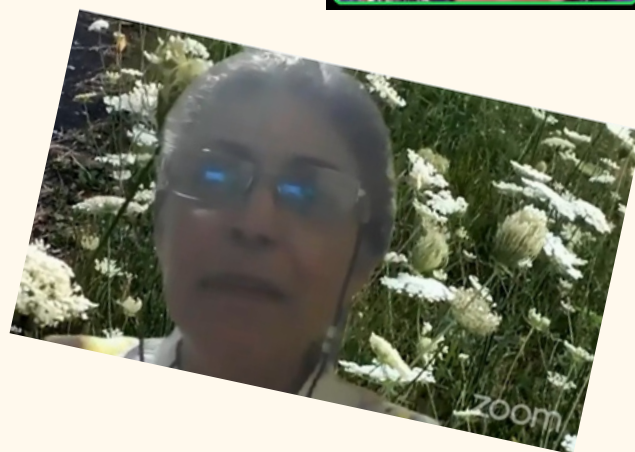
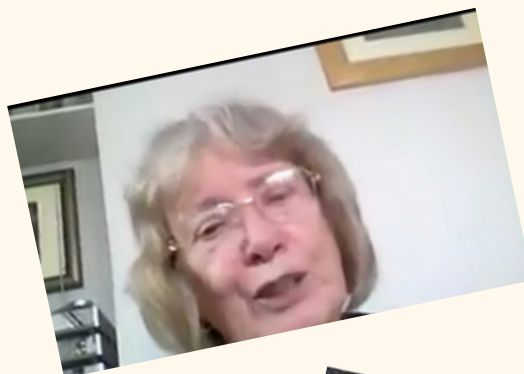
There are wild fires caused by lightening strike damaging wild life. The action plans are to make zero waste community,protect and save water and to create more green spaces to environment

## Ms . Sangeetha Ranjith



Ms.Sangeetha Ranjith our former president SI Madurai addressed everyone on her pet project Miyawaki cultivation which she is introducing to various districts of our state.

## SI Federation's Observers perspective





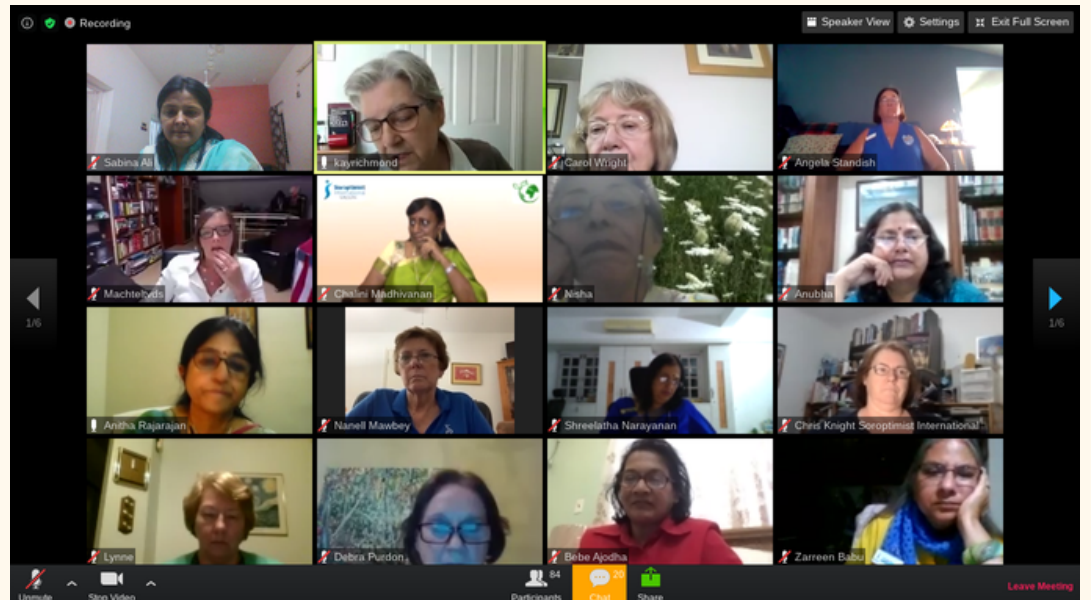
## Vote of Thanks



Our secretary Ms Priyadharshini Karthik delivered her Vote of thanks acknowledging all Speakers, Participants and our chief guest for making this event a grant success.

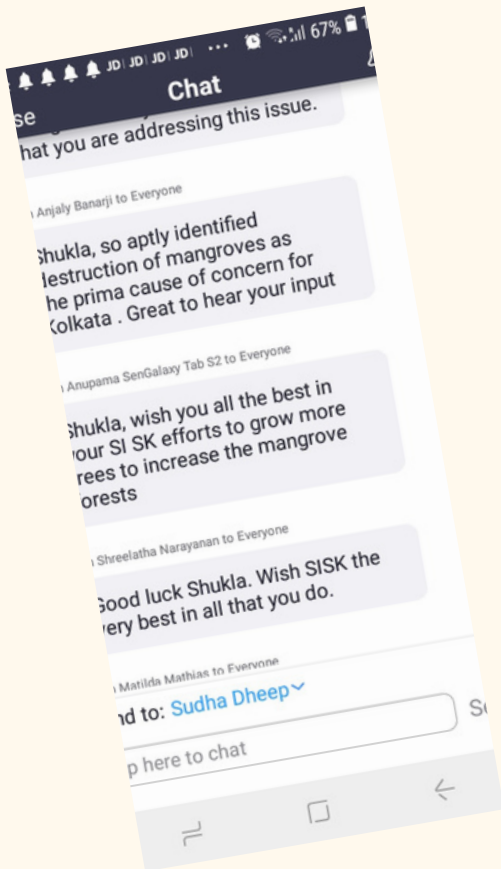
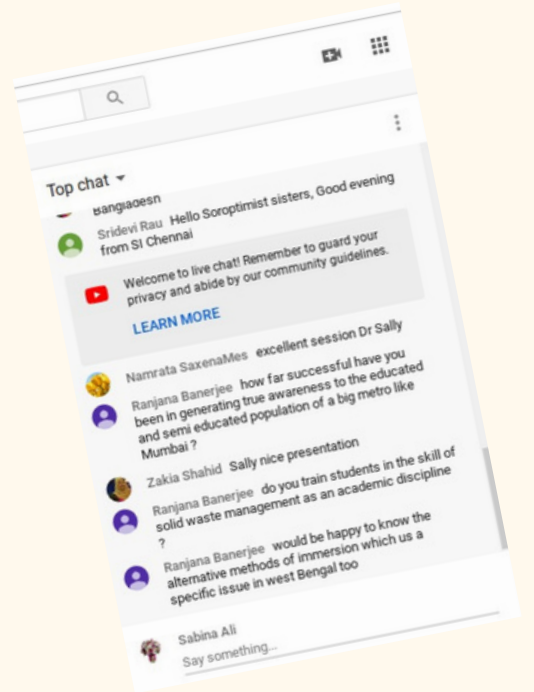
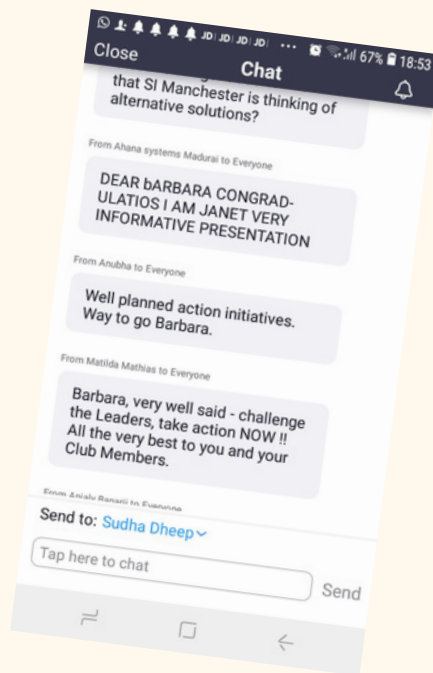
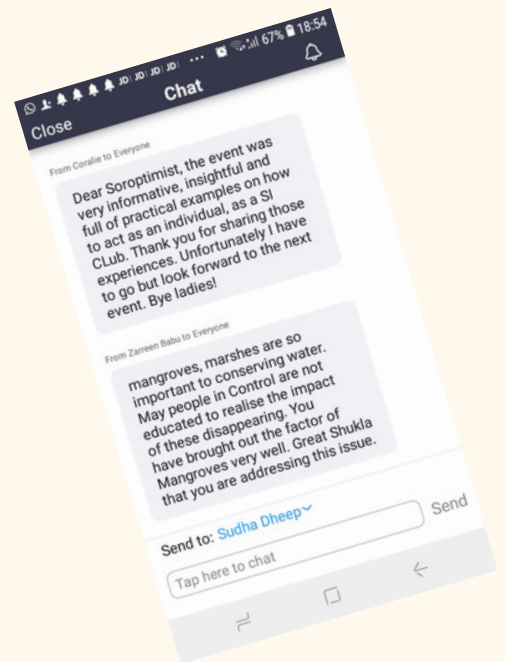
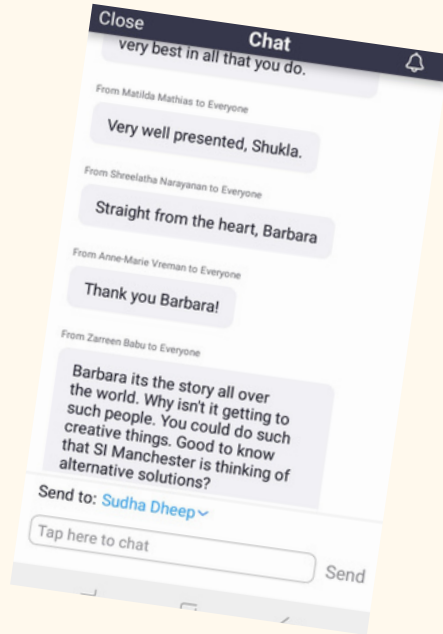
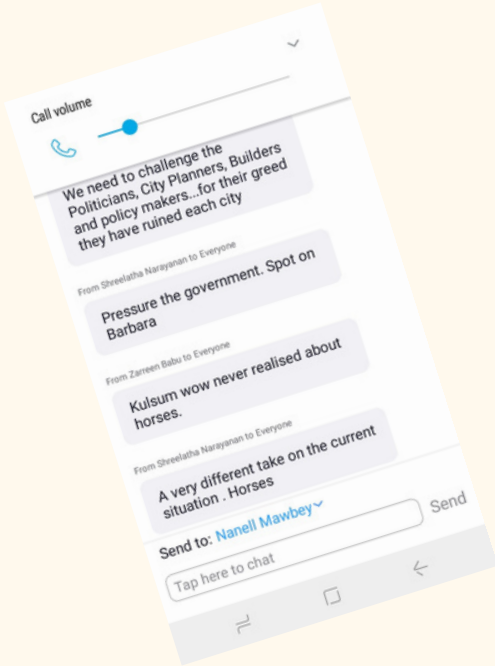
SI Madurai event on "Climate Change" ended well with our National Anthem







# Top Chats





## Event Comments

Thank you Anitha for everything you did to make today possible. It was terrific. I feel so fortunate to have been asked to participate. What an amazing group of women.

Plus we are all Soroptimist's  
Nanell of SI Dallas USA



Good Morning Anitha!

Hope you had a good sleep last night. So much of brain storming, time and effort went into it. It was one of its kind. Great achievement Anitha as you take over as APD Planet. You were ably supported by team Madurai. It was a team work, well conceived, coordinated n executed. You will rock. All the very best from the core of my heart. ♥

Bhaswathi..International friendship link coordinator



Dear Anitha,

Thank you so much! The presentations were worth the very early morning time. My Zoom connection was unstable, so I will watch the YouTube recording when I am somewhere with better internet service. Congratulations on a successful event!

Janet schemph of SI Alaska



Thank you Anitha ji so much for the invite, I got opportunity to gain access to so much knowledge around the globe of our own SI Sisters

Farzana SI Dhanmondi, Bangladesh



Such a wonderfully organised event Anitha. I feel blessed to have been part of it & to learn about the exceptionally great work done by individuals & clubs

Sashikala SI Bangalore



Wonderful initiative and great Webinar. Another feather in the cap for you.

Heartiest Congratulations!!!  
Anubha SI Poona Metro East

## Event Comments

Thank you for inviting us to listen to the climate change virtual speakers. It was valuable information .

Neelima of SI Colombo, Srilanka



Excellent evening. Lots of learning and interactions. Congrats to you and the team. Please give my congrats to them. Regards Anu

Anu Wakhlu..NASI President



All speakers spoke well. Mridula was an excellent Moderator

Kudos to you SI Madurai

Vyjanthi SI Chennai



Hi Anitha..What a pleasure it was for us participants to attend the webinar..well planned and executed by your team...each one did her part well..fantastic

leadership

Soma of SI Calcutta



Thanks a ton!

I was so impressed and inspired by the programme yesterday.

Hats off to you and your team for creating that wonderful experience for all of us.

Salute!

Shukla - SI South Kolkatta



Thank u for a invigorating webinar

Binita -SI Pune Metro East



Dear Anita and Team Madurai

It was a great event.

Very beautifully conceived and executed

Dr Meghna..SI Hydrebad



## Event Comments

Anita, Congratulations ,Well done  
Bebe - SI San Fernando



Like the title ! It has truly become an international meet.well done Anita and the  
entire team

Jamuna SI Bangalore



Awesome meeting Anitha... congratulations  
Priya..Secretary SI Chennai



Exceptional evening. Very proud of Anita and Team Madurai.  
Shrilatha SI Chennai



Excellent program!!! Congratulations Anitha and team.  
Mamta.. President of SI Bangalore



Thank you Anitha for this opportunity. Good co-ordination...  
sally..SI Bomvay chembur



Kudos to all the speakers. You did a splendid job. So much great work is being done  
all around. Proud to be a sorptimist.

Selza of SI Whitefield



Thank you Anita and team. You did a great job  
Tania of SI Aalst



A fantastic international Meeting I enjoyed and learned many things about  
environmental issues around the world and the efforts are being taken by our SI  
Clubs. Good to see our SI sisters from across the world. Thanks a lot to the speakers  
and the organisers.

Dr. SGP from SI Bombay



## Event Comments

Hello. 24 hrs since yesterday. What an idea to connect across Federations, involved all friendship links, all clubs in India. It was a great effort by Anitha. Dr Chalini coordinating all logistics for smoothly taking the program and Priya to managing everything backend. Amazing how you brought everyone together. All presentations did leave a mark of what is significant to their city. And lovely to learn about their club activities as well. There was such great sharing. I have also learnt so much. Congratulations Anitha for being selected for "Who Is She" one of the 100 for 100. A well deserved recognition.

Finally goes out to all the members of Si Madurai ...you have done very well.  
Naina Shah,APD - Planet-SI Chennai



Dear Anitha, I would like to thank you for letting me attend to the event. Unfortunately I have to leave but it is impressive to see all those practical projects developed locally and their impacts on local lives  
Coralie from South of France



What an amazing meeting already. I also want to let you know I'm the Governor of the Southern Region for your records and will be sharing this information with my Region. Blessed to be here with you all.  
Michelle Strawsser..SI Tampa, Florida USA



Anitha & Team Madurai for organising a wonderful meeting on Climate Change. Together we can & we will make the change  
Anupama - SI Pune Metro East



Thank you Anitha and the team Fantastic Marvellous program and the efforts put in from many months Congratulations !!!!  
Anu patil. - SI Bombay West



Great initiative Anitha and team members.Thoroughly enjoyed.  
Piyali those.. SI Calcutta



## Editor's Note

### Thiruvalluvar on friendship

முகநக ந஢்பது ந஢்பன்று நெஞ்சத்து  
அகநக ந஢்பது ந஢்பு.

The smile that dwells in the face is not the true friendship but the smile that emerges in the heart is the true friendship. A good friendship will be like waxing moon. A good friend should set right the mistakes of the other by giving strong ethical advice. We at SI MADURAI are proud of our internal friendship link among us. Let us cherish our friendship and spread our hearty smile to others to make happy and peaceful life for everyone.

**Editor**

*Dr Chalini Madhivanan*

## Founder President S1 Madurai



**Ms. Anitha Rajarajan**  
2009 -2012

## Former Presidents of S1 Madurai

**Ms. Divya Gupta**  
2012-2013



**Ms. Suganya Jeganathan**  
2013-2014



**Dr. Sudha Dheep**  
2014-2015



**Ms. Latha Abiruban**  
2015-2016



**Ms. Sangeetha Ranjit**  
2016-2017



**Ms. Chitra Ganapathy**  
2017-2018



**Ms. Sabina Ali**  
2018-2019



**Dr. D. Jenet Vasantha Kumari**  
2019-2020





## Members of SI Madurai

**Ms. Anitha Rajarajan**

**Ms. Anita Lakshman**

**Ms. Anita Micheal**

**Ms. Anitha Britto**

**Dr. Chalini Madhivanan**

**Ms. Chitra Ganapathy**

**Ms. Divyesh Ramu**

**Ms. Geethanjali Dattareya**

**Dr. Hema Sathish**

**Dr. D. Janet Vasantha Kumari**

**Ms. Jeyanthi Annamalai**

**Dr. Lakshmi Subburaj**

**Ms. Lakshmi Murugesan**

**Dr. Lalitha Prajna**

**Ms. Latha Abiruben**

**Dr. Manju Anilkumar**

**Ms. Mehrun Ismail**

**Ms. Priya Naresb**

**Ms. Priyadarshini Karthik**

**Dr. Rohini Shridar**

**Ms. Roopa Mahesh**

**Ms. Rukmini Palanivelrajan**

**Ms. Sabina Ali**

**Ms. Sangeetha Ranjit**

**Ms. Sharmila Siraj**

**Dr. Sudha Dheep**

**Ms. Sukanya Jegannathan**

**Ms. Uma Kannan**

**Ms. Unna Vairavan**

**Dr. Usha Kim**

**Ms. Valli Annamalai**

## Hon. Members

**Ms. Shubhra Somani**

**Ms. Umanjali Pradip**

**Ms. Premalatha Paneerselvam**

**Ms. Rajakumari Ramasubramaniam**

**Ms. Kalpana Shankar**



NEWSLETTER SI MADURAI  
JUNE 2020 - AUGUST 2020



# Soroptimist International Madurai

**"Let the green be seen"**